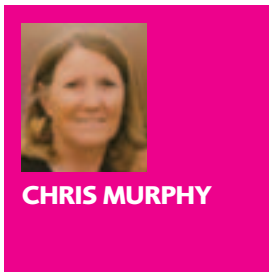


Girls Go Out



CHRIS MURPHY

This has been a super summer to end our 9th year. When the torch came through Newport in July the Girls Go Out held a stall at the village fête to help celebrate the start of the Olympics. Many of the ladies donated chocolates, flowers, wine, days out and cakes to the celebration tombola, which a group of our ladies manned all afternoon come rain and shine. The club also donated bottles of fizzy wine and at the request

of the organisers served Pimms as well. In all the Girls Go Out donated nearly £500 to the Newport village causes. We were very pleased to be able to make such a wonderful contribution to the village and thanks to all the ladies involved.

We also held a celebration of the Jubilympics in June in Church House with an amazing buffet and quiz for 24 ladies.

In late August a group of ladies and friends took a river cruise on the Cam on the Riverboat Georgina. A very calm and pleasant evening was enjoyed by all.

Other events included a visit to the Fry Art Gallery in Saffron Walden and a trip to the local museum at Ashdon. And despite a lot of rain a group travelled by the guided bus to St Ives for lunch and a look round the market and another group visited gardens

near Coggleshall.

If you would like to join in any of our activities please join our mailing list by contacting Jane Murphy (email: janemurphy11@aol.com). We don't have a regular meeting day or a fee for being involved. **NN**

BELOW: A TRIP ON THE CAM BY RIVERBOAT WITH FRIENDS AND PARTNERS

BOTTOM: OUR JUBILYMPICS CELEBRATIONS IN CHURCH HOUSE

LEFT: GIRLS ON A GARDEN VISIT IN THE RAIN



H. FRANK HICKS

PLANT HIRE

www.hicksplanthire.co.uk

Established 1967

01763 838533

Self-Drive

Micro-Diggers, Mini-Diggers, Dumpers, Rollers

With Operator

Larger diggers, or we can provide a highly skilled operator with any of our Self-Drive equipment

Sand & Ballast, etc.

We are suppliers of high quality sand, ballast, limestone, crushed concrete, topsoil and other aggregates

Coopers End Farm, Duddenhoe End, Saffron Walden, Essex, CB11 4UX

